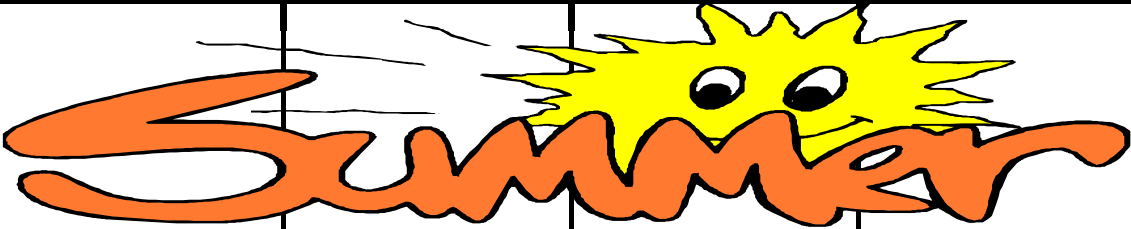


YDI Breakfast Menu (Age 1 up to 2nd Birthday)

+ = High in Vitamin C		June 2025				* = High in Vitamin A	Nutrition Ed
		Monday	Tuesday	Wednesday	Thursday	Friday	
week I	2	1/2 c Whole Milk 1/8 c +Strawberries & 1/8 c Blueberries (Fresh in Season) ripe, remove stems, cut 1/4 c Scrambled Egg w/ Ketchup 14 gms Warm WW Tortilla	3 1/2 c Whole Milk 1/4 c +Pineapple Tidbits 1/4 c Cream of Wheat (14 gms dry)	4 1/2 c Whole Milk 1/4 c +Fresh Orange Sections, peel & cut in small pieces, remove membranes to prevent choking when developmentally appropriate 28 gms WG Banana Whole Wheat Muffins (No nuts)	5 1/2 c Whole Milk 1/4 c + Cantaloupe, ripe, cut in sm pcs 1/2 c WG Cheerios, 14 gms	6 1/2 c Whole Milk 1/4 c +Mandarin Oranges Mc Head Start Muffin (Toasted WW English Muffin, 14 gms w/ 1/4 c Scrambled Egg-xtra & Sprinkling of Cheese-x-tra)	
	9	1/2 c Whole Milk 1/4 c + Mandarin Oranges 1/4 c Scrambled Egg, x-tra w/ 2 Tbl. Ketchup Warm WG/WW Tortilla, 14 gms	10 1/2 c Whole Milk 1/4 c +Honedew, ripe, peel & cut in small pieces 17 gms WG/WW Pancakes w/ 1-2 Tbl. Syrup	11 1/2 c Whole Milk 1/4 c +Kiwi, ripe, peel & slice in small pieces 1/4 c Cream of Wheat, (14 gms dry)	12 1/2 c Whole Milk 1/4 c +Fresh Orange Sections, peel & cut in small pieces, remove membranes to prevent choking when developmentally appropriate 14 gms WG/WW Biscuit w/ 1-2 Tbl. Jelly	13 1/2 c Whole Milk 1/4 c + Pineapple Tidbits 14 gms Pita Bread w/ 1/2 oz Melted Cheddar Cheese, x-tra	
	16	1/2 c Whole Milk 1/4 c +Pineapple Tidbits 35 gms WG/WW French Toast Sticks w/ 2 Tbl warm cinnamon Applesauce, x-tra	17 1/2 c Whole Milk 1/4 c + Cantaloupe, ripe, cut in sm pcs 1/2 c WG Oatmeal, (14 gms dry)	18 1/2 c Whole Milk 1/4 c +Kiwi, ripe, peel & cut in sm pcs 14 gms WG Toasted Bagel w/1/2 oz Melted Mozzarella Cheese, x-tra	19 1/2 c Whole Milk 1/4 c +Fresh Orange Sections, peel & cut in small pieces, remove membranes to prevent choking when developmentally appropriate 28 gms WG Banana Whole Wheat Muffin (No Nuts)	20 1/4 c +Strawberries (Fresh in Season) ripe, remove stems, cut in sm pcs 3/4 c Vegetable Skillet Frittata (1/4 c Egg & w/ vegetables xtra) 14 gms WG/WW toast Lightly Buttered	
	23	1/2 c Whole Milk 1/4 c +Strawberries (Fresh in Season) ripe, remove stems, cut in sm pcs Scrambled Egg (1/4 c), x-tra Sandwich on WG/WW Biscuit, 14 gms	24 1/2 c Whole Milk 1/8 c +Orange Slices & 1/8 c banana slices, peel & cut in sm pcs remove membranes to prevent choking when developmentally appropriate 1/4 c WG Oatmeal, (14 gms dry)	25 1/2 c Whole Milk 1/4 c +Pineapple Tidbits Toasted WG Bagel, 14 gms, w/1-2 Tbl. Jelly	26 1/2 c Whole Milk 1/4 c + Cantaloupe, ripe, cut in sm pcs 17 gms, WG Waffle w/ 1-2 Tbl. Syrup	27 1/2 c Whole Milk 1/4 c +Mandarin Oranges 14 gms Warm Cheese Pita (1/2 oz Melted Cheddar Cheese-x-tra, on Pita Bread)	
	30	1/2 c Whole Milk 1/8 c +Strawberries & 1/8 c Blueberries (Fresh in Season) ripe, remove stems, cut 1/4 c Scrambled Egg w/ Ketchup 14 gms Warm WW Tortilla					

** subject to availability** These menus were developed and approved for the sole use of Youth Development Inc. and are not for public distribution.

Notes: 1) texture will be modified for each child's developmental level. 2) YDI menus are nut free and do not permit outside food. 8/1/2019


Non-Discrimination Statement: This explains what to do if you believe you have been treated unfairly. In accordance with Federal Law and U.S. Department of Agriculture (USDA) civil rights, regulations and policies, this institution is prohibited from discriminating on the basis of race, color, national origin, sex (including gender identity and sexual orientation) disability, age, or reprisal or retaliation for prior civil rights activity. To file a complaint of discrimination, write USDA, Director, Office of Adjudication, 1400 Independence Avenue, SW, Washington, D.C. 20250-9410 or call toll free (866) 632-9992 (Voice). Individuals who are hearing impaired or have speech disabilities may contact USDA through the Federal Relay Service at (800) 877-8339; or (800) 845-6136 (Spanish). USDA is and equal opportunity provider and employer.

YDI Lunch Menu (Age 1 up to 2nd Birthday)

+ = High in Vitamin C

June 2025

* = High in Vitamin A

	<i>Monday</i>	<i>Tuesday</i>	<i>Wednesday</i>	<i>Thursday</i>	<i>Friday</i>	<i>Nutrition Ed</i>
week I	2 1/2 c Whole Milk 1/2 c Beef & Spaghetti Casserole (1 1/2 oz meat, 1/4 c *Sauce, and 1/4 c WG Spaghetti Noodles) 1/8 c Pears	3 1/2 c Whole Milk 3/4 c Chile Con Carne (1 1/2 oz Ground Turkey, 1/4 c Red Beans & *Sauce) 1/8 c +Kiwi, ripe, peel & cut 17 gms WG Corn Bread	4 1/2 c Whole Milk 1 oz BBQ Chicken (8 pc) 1/8 c * Green Beans, cut in small pcs & well cooked 1/8 c Diced Peaches 14 gms, WW/WG Bread, Lightly Buttered	5 1/2 c Whole Milk 1 oz Beef Pot Roast 1/8 c Oven Baked Potatoes 1/8 c * Steamed Carrots, cut in small pcs, well cooked 14 gms, WW/WG Bread, Lightly Buttered	6 1/2 c Whole Milk 3/4 c *WG Penne Pasta w/four cheeses (1 1/2 oz Cheddar, Mozzarella, shredded Parmesan & *Sauce extra) 1/8 c Sautéed Spinach w/ Onion-x-tra 1/8 c Honeydew, ripe, peel & cut in sm pcs 14 gms WG Bread Stick w/ garlic butter	
week I	9 1/2 c Whole Milk 1 oz Salisbury Steak 1/8 c mash potato 1/8 c Green beans 14 gms WG/WW Bread, lightly buttered	10 1 oz Teriyaki Chicken (8 pc) well cooked & deboned 1/2 c Broccoli & Stir Fry Noodles (1/4 c WG spaghetti noodles stir Fried w/ 1/4 c * Broccoli, cut up in sm pcs, cook until soft & green onions x-tra 1/8 c Banana Chunks (Dip in PA juice)	11 1/2 c Whole Milk 1/2c Green Chili Stew w/ 1 oz diced pork loin, 1/8 c Potato, Tomato & green chili to taste 1/4c Calabacitas w/ peppers & onion 1/8 c +Cantaloupe, ripe, cut in sm pcs warm WGWW tortilla 14 gms	12 1/2 c Whole Milk Pizza Pup-1 1/2 oz Grnd Beef on 14 gms ww Bun w/ a Sprinkling of mozzarella Cheese, x-tra & *sauce extra (see recipe) 1/8 c Green Beans w/ Sautéed onion extra 1/8 c Sliced Apples (Dip in +PA Juice-x-tra) remove skin, Steam, Chill, peel & cut in small pcs.	13 1/2 c Whole Milk Bean Burrito on 14 gms Warm WG WW Tortilla (1/2 c Refried beans & Sprnkl of Monterey jack cheese extra) 2 Tbl. * Tomato Salsa, x-tra no lett or tom 1/4 c Spinach w/ Onion-x-tra 1/8 c +Strawberries ripe, remove stems, cut in sm pcs)	
week II	16 1/2 c Whole Milk Sloppy Joe on a 14 gms WGWW Bun (1/3 c Meat Mixture= 2 oz) 1/8 *Fresh Steamed Broccoli, cut in sm pcs & well cooked 1/8 c +Mandarin Oranges	17 1/2 c Whole Milk Bean Tostada w/ 1/2 c homemade Refried Beans & a Sprnkl of cheddar Cheese, x-tra on WG tostada shell (14gms) No Lettuce & Tomato 2 Tbl. *Tomato Salsa, x-tra 1/8 c Green Beans w/ Onions, x-tra 1/8 c Applesauce	18 1/2 c Whole Milk 1 1/4 oz Oven Baked Parmesan Chicken (Thigh Meat) 1/8 c Zucchini w/ onion, extra 1/8 c Fruit Cocktail, cut grapes in half 14 gms WG/WW Bread	19 1/2 c Whole Milk 3/4 c Beefaroni (11/2 oz grnd beef 1/4 cWG Elbow Macaroni, & 1/4 c Tomato Jc, tomato, corn. Onion 1/4 c * Sautéed Spinach w/ onion extra 1/8 c Sliced Apples (Dip in + PA jce) remove skin, steam, chill, cut in small pcs extra	20 1/2 c Whole Milk 1 oz Baked buttered Tilapia w/ lemon pepper 1/4 c Roasted Vegetables (1/8 c Red/New Potato, 1/8 c *Carrot & Onion-x-tra) 1/8 c +Honeydew, ripe, cut in sm pcs 14 gms WG/WW Dinner Roll	
week III	23 1/2 c Whole Milk 1/6 Cottage Pie (1 1/2 oz grnd beef 1/4 c mash potato lf gravy 1/8 c * Steamed Broccoli, cut in small pcs & well cooked 14 gms WG/WW Bread lightly buttered	24 1/2 c Whole Milk 1/2 Chicken Enchilada (1 1/2 oz Chicken & Cheese, 14 gms WG Corn Tortilla & Mild Green Chile) 1/8 c *Zucchini w/ Onions, x-tra 1/8 c Pears (Fresh in season) ripe, peel & cut in sm pcs	25 1/2 c Whole Milk Pork Burrito (1 1/2 oz shredded Pork, & 1/2 c * vegetable) on Warm 6" WGWW tortilla 1/8 c Fruit Cocktail, cut grapes in half	26 1/2 c Whole Milk 1/2 Hamburger on 14 gms wwwg bun (1 1/2 oz Meat, Pickles, Ketchup, Mustard) 1/8 c *Baked Sweet Potato Fries 1/8 c +Honeydew or Watermelon (In Season) ripe, peel & cut in sm pcs	27 1/2 c Whole Milk 1 c Maccaroni and Cheese with Tuna (1 oz Cheddar Cheese, 1/2 oz Tuna 1/4 c WG Rotini Pasta 1/8 C Peas and Carrots 1/8 c +Strawberries (ripe, remove stems, cut in sm pcs)	
week IV	30 1/2 c Whole Milk 1/2 c Beef & Spaghetti Casserole (1 1/2 oz meat, 1/4 c *Sauce, and 1/4 c WG Spaghetti Noodles) 1/8 c Pears					

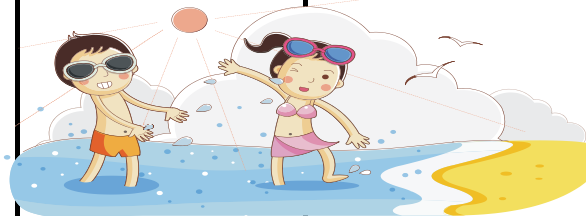
** subject to availability** These menus were developed and approved for the sole use of Youth Development Inc. and are not for public distribution.

Notes: 1) texture will be modified for each child's developmental level. 2) YDI menus are nut free and do not permit outside food. 8/1/2019

Non-Discrimination Statement: This explains what to do if you believe you have been treated unfairly. In accordance with Federal Law and U.S. Department of Agriculture (USDA) civil rights, regulations and policies, this institution is prohibited from discriminating on the basis of race, color, national origin, sex (including gender identity and sexual orientation) disability, age, or reprisal or retaliation for prior civil rights activity. To file a complaint of discrimination, write USDA, Director, Office of Adjudication, 1400 Independence Avenue, SW, Washington, D.C. 20250-9410 or call toll free (866) 632-9992 (Voice). Individuals who are hearing impaired or have speech disabilities may contact USDA through the Federal Relay Service at (800) 877-8339; or (800) 845-6136 (Spanish). USDA is an equal opportunity provider and employer.

YDI PM Snack Menu (Age 1 up to 2nd Birthday)

+ = High in Vitamin C						June 2025						* = High in Vitamin A						Nutrition Ed					
Monday						Tuesday						Wednesday						Thursday					
Friday																							
week IV						week I						week II						week III					
2						3						4						5					
1/2 c Cold Water 1/2 c +Pineapple 1/2c WG Kix Cereal						1/2 c Cold Water 1/2 oz String Cheese 1/2 c Broccoli Florettes (steam & chill) 1-2 Tbl. FF Ranch Dressing						1/2 c Cold Water Whole Banana 11 gms WG Gold Fish Crackers						1/2 c Cold Water 1/2 c Applesauce Toasted Cinnamon Raisin Bagel, 14 grms, lightly buttered					
6						7						8						9					
1/2 c Cold Water 1/8 c / 2 Tbl Hummus Dip, x-tra 1/2 c Cucumber Slices 14 gms Pita Crisps (Crispy baked pita triangles)						10						11						12					
1/2 c Cold Water 1/4 c *Carrot Sticks, Steam & Chill 1/4 c Cucumber Sticks peel and remove seeds w/ 1-2 Tbl FF Ranch Drsg. 1/2 oz Cheddar Cheese Cubes						1/2 c Whole Milk 28 gms WG Banana Whole Wheat Muffin (No nuts)						1/2 c Cold Water 1/2 c Applesauce 14 gms WGWW English Muffins, Lightly Buttered						1/2 c Cold Water 1/2 c Fruit Cocktail 14 gms Graham Crackers (No Honey)- Aprox. 2 cracker squares (cut grapes in half)					
13						14						15						16					
3/4 c Peach Smoothie (1/4 c Yogurt, 1/2 c peaches) 11 gms WG Gold Fish Crackers						1/2 c Cold Water 14 gms WWWG toast lightly buttered 1/2 c Apple, +Orange, Banana Salad, peel & cut in sm pcs, remove membrane from oranges w/ OJ Con (see recipe) steam apples if needed						1/2 c Cold Water 1/2 c Whole Milk Toasted WGWW English Muffin, 14 gms, w/ 1-2 Tbl. Jelly						1/2 c Cold Water 1/2 c Whole Milk 1/2 c WG Kix, 14 gms (corn)					
17						18						19						20					
1/2 c Cold Water 1/2 c *Strawberries, ripe, remove stems, cut in sm pcs (Fresh in Season) 1/2 oz Mozz String Cheese						1/2 c Cold Water 1/2 c Apple Slices, remove skin, steam, chill, peel & cut in small pcs. (Dip in +PA Juice, x-tra) 1/2 oz Mozz. String Cheese						1/2 c Cold Water 1/2 c Whole Milk 14 gms Graham Crackers (No Honey)						1/2 c Cold Water 1/2 c Black Bean and Corn Salad 14 gms Seasoned Pita Crisps (crispy Baked Pita Triangles)					
21						22						23						24					
1/2 c Cold Water 1/2 c Cucumber Sticks peel and remove seeds 1 Tbl FF Ranch Drsg 11 gms WG Goldfish Crackers						1/2 c Cold Water 1/2 c Apple Slices, remove skin, steam, chill, peel & cut in small pcs. (Dip in +PA Juice, x-tra) 1/2 oz Mozz. String Cheese						1/2 c Cold Water 1/2 c Whole Milk 1/2 c Peaches						1/2 c Cold Water 1/2 c Whole Milk 14 gms Graham Crackers (No Honey)					
25						26						27						28					
1/2 c Cold Water 1/2 c +Pineapple 1/2c WG Kix Cereal						1/2 c Cold Water 1/2 c Banana 1/4 c Vanilla Yogurt Dip Topped with a Sprinkling of WG Cherrios, x-tra						29						30					
week IV						week IV						week IV						week IV					
1/2 c Cold Water 1/2 c +Pineapple 1/2c WG Kix Cereal						1/2 c Cold Water 1/2 c +Pineapple 1/2c WG Kix Cereal						1/2 c Cold Water 1/2 c +Pineapple 1/2c WG Kix Cereal						1/2 c Cold Water 1/2 c +Pineapple 1/2c WG Kix Cereal					



**** subject to availability**** These menus were developed and approved for the sole use of Youth Development Inc. and are not for public distribution.

Notes: 1) texture will be modified for each child's developmental level. 2) YDI menus are nut free and do not permit outside food. 8/1/2019

Non-Discrimination Statement: This explains what to do if you believe you have been treated unfairly. In accordance with Federal Law and U.S. Department of Agriculture (USDA) civil rights, regulations and policies, this institution is prohibited from discriminating on the basis of race, color, national origin, sex (including gender identity and sexual orientation) disability, age, or reprisal or retaliation for prior civil rights activity. To file a complaint of discrimination, write USDA, Director, Office of Adjudication, 1400 Independence Avenue, SW, Washington, D.C. 20250-9410 or call toll free (866) 632-9992 (Voice). Individuals who are hearing impaired or have speech disabilities may contact USDA through the Federal Relay Service at (800) 877-8339; or (800) 845-6136 (Spanish). USDA is an equal opportunity provider and employer.